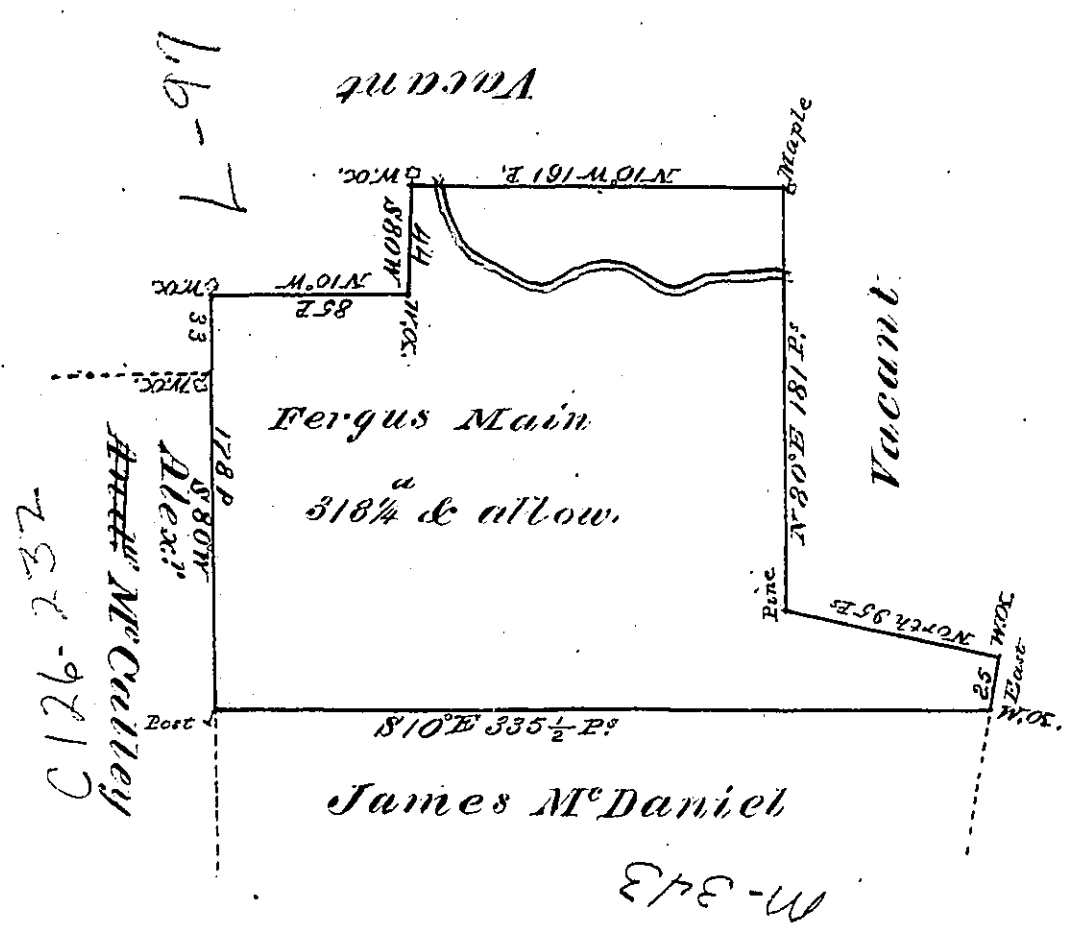


W



A Draught of a Tract of Land Called — Situate
 on a Branch of Nesepeck Creek adjoining land Surveyed
 for Andrew McCutley and others in the County of
 Northumberland, Containing three hundred and
 Eighteen Acres & a quarter of an Acre besides the
 usual allowance of six pr. cent for Roads &c.
 Surveyed the 8th day of May 1775, ^{for Fergus Main} In pursuance of
 a warrant Dated the 12th Day of April 1775.

To
 John Loukens Esq: Survey: Genl.
 by Cha: Stewart Dep. Surv:

IN TESTIMONY that the above is a copy of the original remaining on file in the
 Department of Internal Affairs of Pennsylvania, made conformably to an Act of Assembly approved the 16th day of
 February, 1833, I have hereunto set my Hand and caused
 the Seal of said Department to be affixed at Harrisburg, this
 Twenty Third day of August 1876

Wm M Candler
 Secretary of Internal Affairs